

TRAIL MAP - WALLS OF JERICHO

Lat 35d 00.000 m

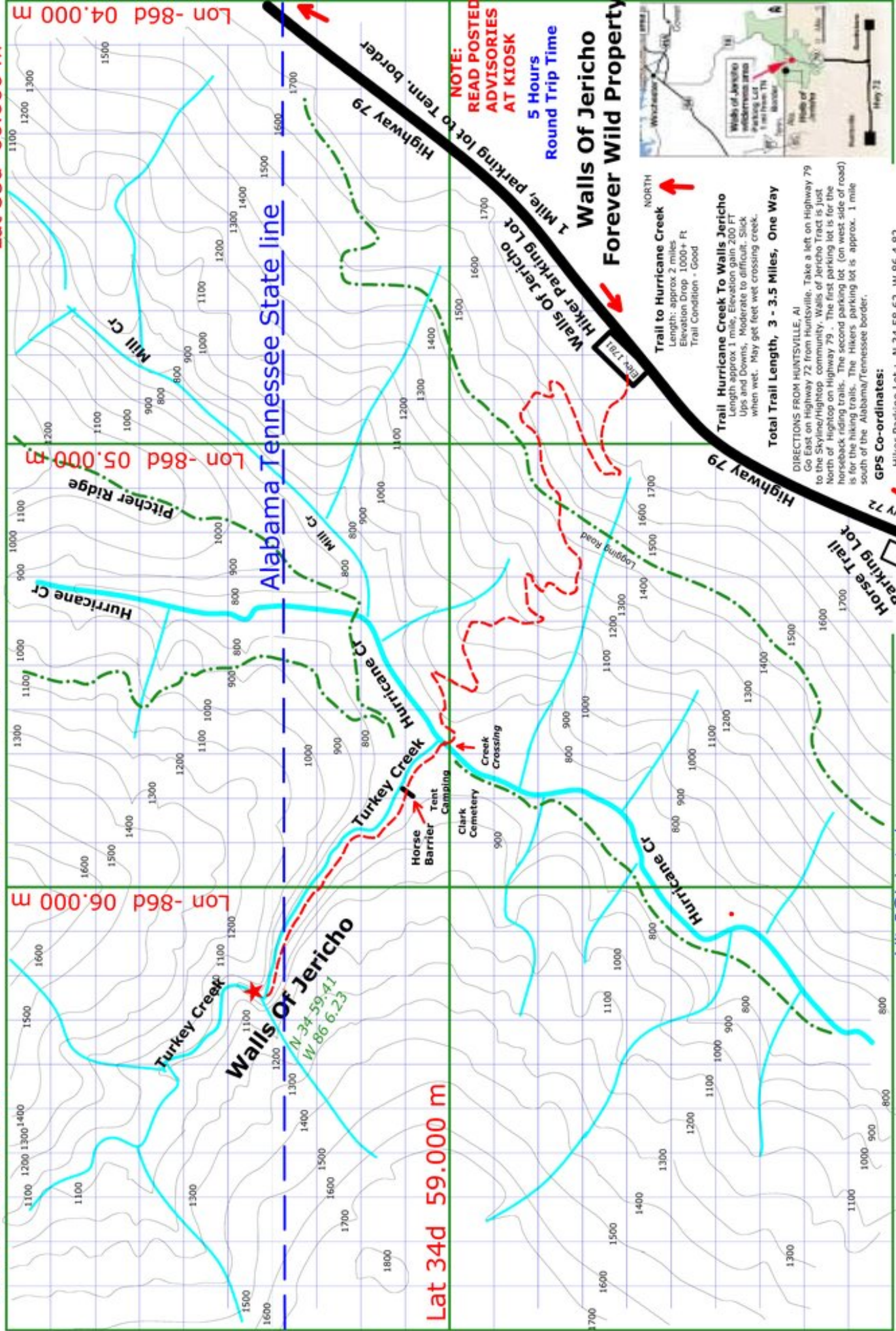
Lat 35d 00.000 m

Lon -86d 07.000 m

Lon -86d 06.000 m

Lon -86d 05.000 m

Lon -86d 04.000 m



**NOTE:
READ POSTED
ADVISORIES
AT KIOSK**

**5 Hours
Round Trip Time**

**Walls Of Jericho
Forever Wild Property**

Trail to Hurricane Creek
Length: approx 2 miles
Elevation Drop 1000+ Ft
Trail Condition - Good

Trail Hurricane Creek To Walls Jericho
Length approx 1 mile, Elevation gain 200 FT
Ups and Downs, Moderate to difficult. Slick when wet. May get feet wet crossing creek.

Total Trail Length, 3 - 3.5 Miles, One Way

DIRECTIONS FROM HUNTSVILLE, AL
Go East on Highway 72 from Huntsville. Take a left on Highway 79 to the Skyline/Highstep community. Walls of Jericho Tract is just North of Hightop on Highway 79. The first parking lot is for the horseback riding trails. The second parking lot (on west side of road) is for the hiking trails. The Hikers parking lot is approx. 1 mile south of the Alabama/Tennessee border.

GPS Co-ordinates:

Hiker Parking Lot : N 34 58.62, W 86 4.82
Hurricane Cr/Trail : N 34 59.01, W 86 5.68
Walls Of Jericho : N 34 59.41, W 86 6.23



N. Walker walker5@briartech.com
See www.briartech.com for current email address
corrections/suggestions appreciated

Lat 34d 58.000 m

10/18/2004

**Hwy 79/Tn Border:
N 34 59.38, W 86 4.04**